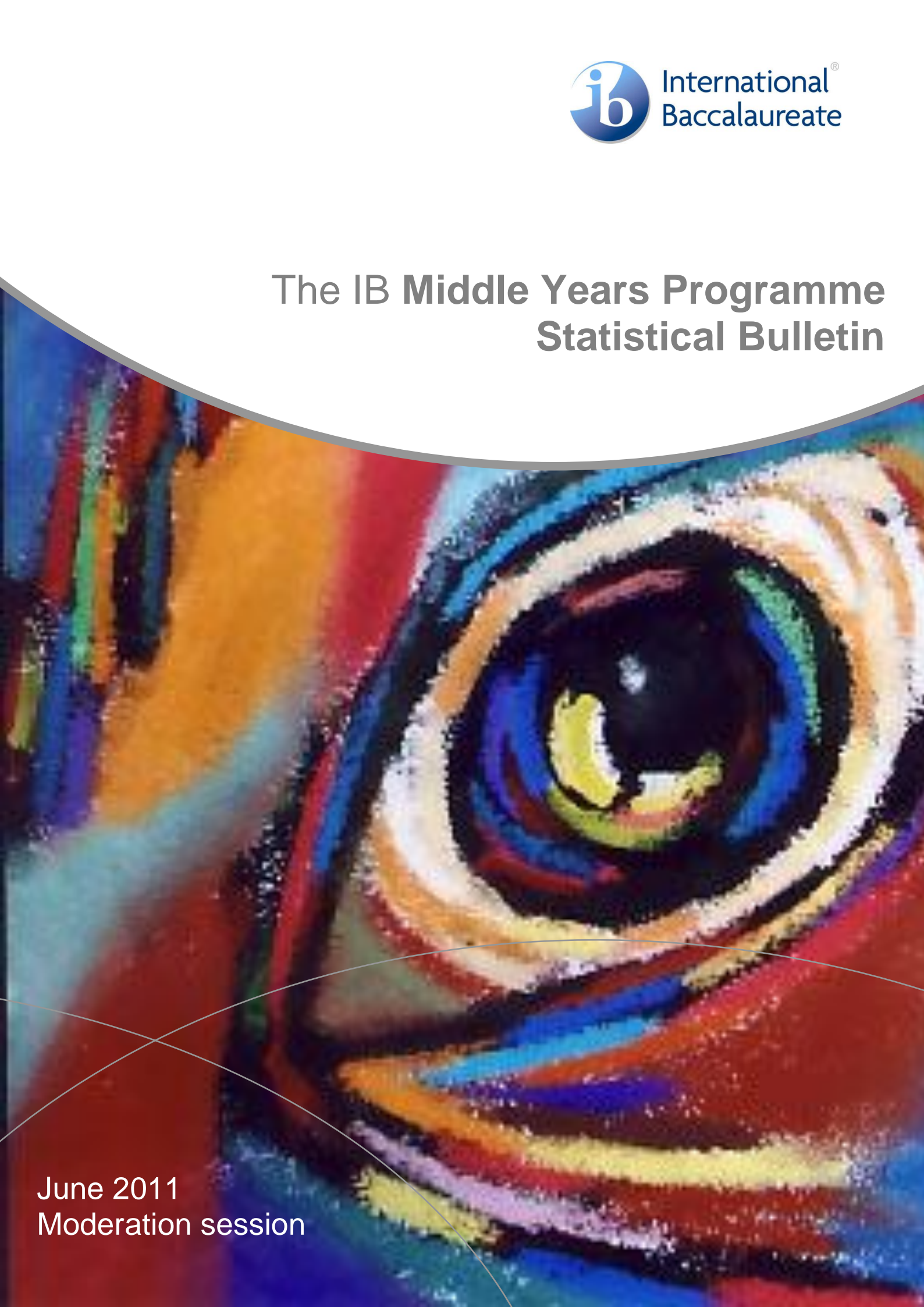


The IB Middle Years Programme Statistical Bulletin



June 2011
Moderation session

Middle Years Programme Statistical Bulletin, June 2011 moderation session

Published in November 2011

International Baccalaureate
Peterson House, Malthouse Avenue, Cardiff Gate
Cardiff, Wales CF23 8GL
United Kingdom
Phone: + 44 29 2954 7777
Fax: + 44 29 2054 7778
Website: www.ibo.org

© International Baccalaureate Organization 2011

Statistical queries should be directed to the
Management Information Associate Manager:

Phone: +65 6579 5168
Fax : +65 6776 4369
E-mail: statistics@ibo.org

Contents

Tables and graphs		Page
Index: key to abbreviations		3
Part A: general school statistics		
1	Number of schools following the Middle Years Programme 2007–2011	4
2	Number and percentage of schools following the Middle Years Programme by working language 2007–2011	5
3	Number and percentage of schools following the Middle Years Programme by IB region 2007–2011	6
Part B: moderation registration statistics		
4	Number of schools registering candidates for moderation June 2007–June 2011	7
5	Number of schools registering candidates for moderation by working language June 2007–June 2011	8
6	Number and percentage of schools registering candidates for moderation by IB region June 2007–June 2011	9
7	Number of candidates registered for moderation by category June 2007–June 2011	10
8	Number of candidates registered for moderation by gender June 2007–June 2011	11
9	Number of candidates registered for moderation by IB region June 2007–June 2011	12
10	Number of candidates registered by gender and IB region June 2010	13
11	Summary of Middle Years Programme moderation: schools with moderated candidates June 1994–June 2011	14
12	Nationalities of candidates registered for moderation June 2011	15
13	Number of countries represented by moderation session June 2007–June 2011	17
14	Number of candidates registered for moderation by country June 2011	18
15	Number and percentage of candidates registered for moderation per subject June 2007–June 2011	19
Part C: results statistics		
16	Analysis of examination results by subject June 2011	23
17	Subject mean grades June 2007–June 2011	26
18	Overall mean grade June 2007–June 2011	29
19	Number of MYP certificates awarded June 2007–June 2011	29

Index: key to abbreviations

IB regions

Schools that are authorized to offer the IB Diploma Programme are grouped by geographical region. The abbreviations used in the tables are the codes describing the following geographical regions:

IBAEM	IB Africa, Europe and the Middle East
IBAP	IB Asia-Pacific
IBA	IB Latin America, North America and the Caribbean

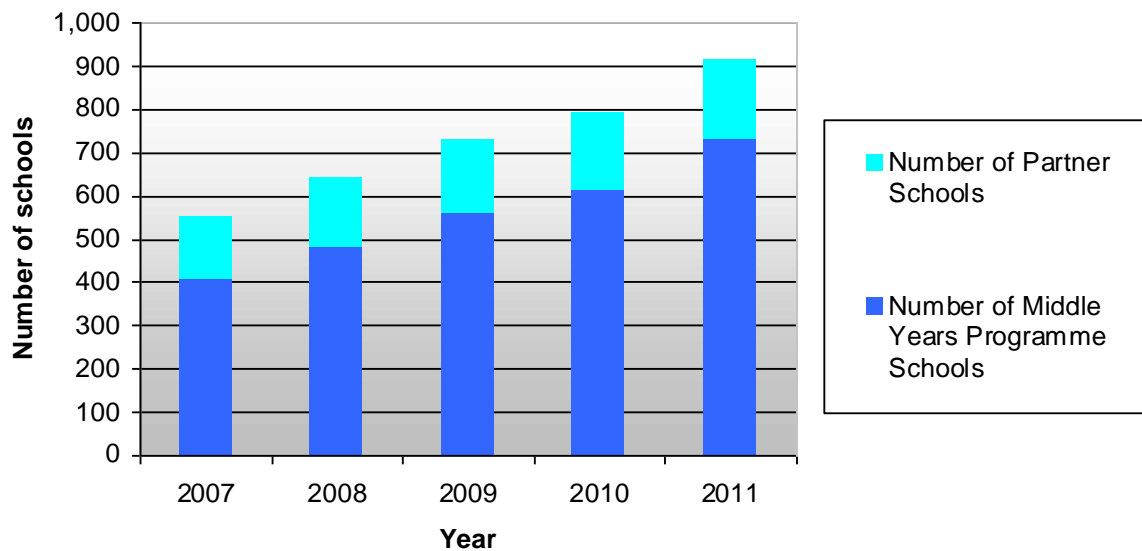
PART A: general school statistics

1 Number of schools following the Middle Years Programme 2007–2011

Number of schools following the Middle Years Programme*	2007	2008	2009	2010	2011
MYP	407	480	560	611	729
PARTNER	142	163	169	178	185
TOTAL	550	643	729	789	914

*as of 30 June each year

Graph 1.1 Number of schools following the Middle Years Programme 2007–2011

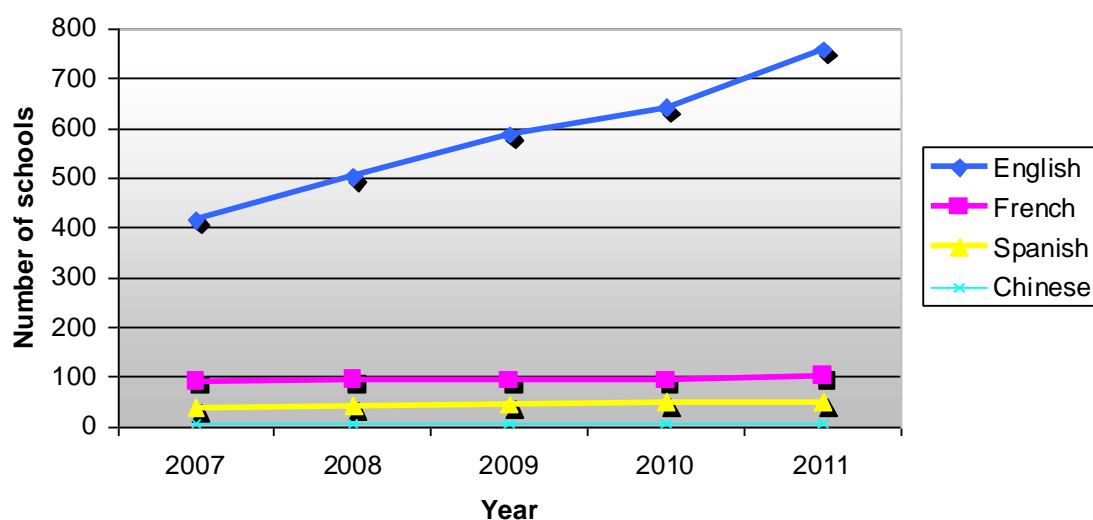


2 Number and percentage of schools following the Middle Years Programme by working language 2007–2011

Number of schools following the Middle Years Programme by working language*	2007	2008	2009	2010	2011
English	415	501	587	641	758
French	91	94	92	93	101
Spanish	37	41	44	49	49
Chinese	7	7	6	6	6
Total	550	643	729	789	914

*as of 30 June each year

Graph 2.1 Number of schools following the Middle Years Programme by working language 2007–2011



Percentage of schools following the Middle Years Programme by working language*	2007	2008	2009	2010	2011
English	75.45%	77.92%	80.52%	81.24%	82.93%
French	16.55%	14.62%	12.62%	11.79%	11.05%
Spanish	6.73%	6.53%	6.04%	6.21%	5.36%
Chinese	1.27%	1.09%	0.82%	0.76%	0.66%

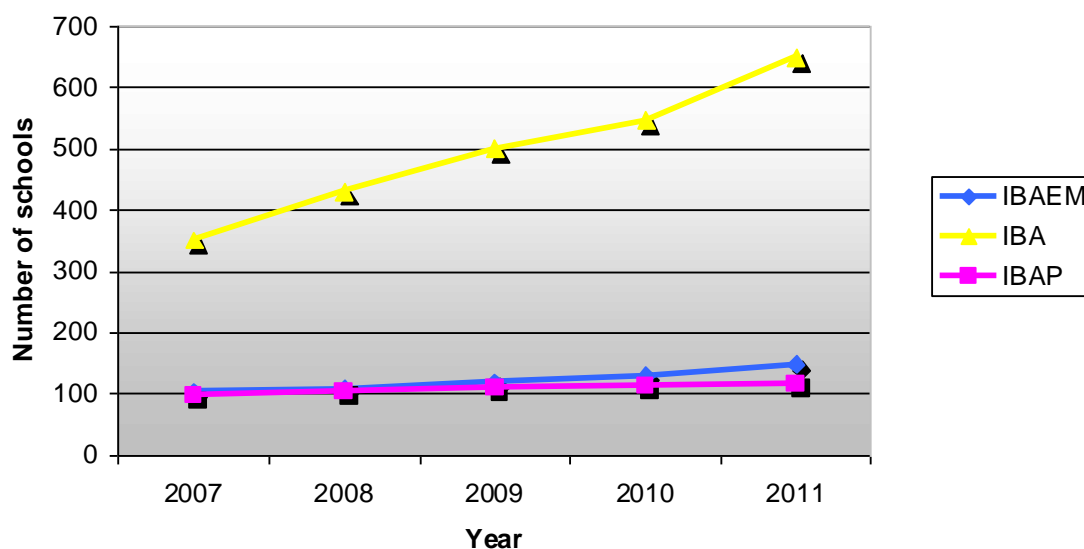
*as of 30 June each year

3 Number and percentage of schools following the Middle Years Programme by IB region 2007–2011

Number of schools following the Middle Years Programme by IB region*	2007	2008	2009	2010	2011
IBAEM	103	108	119	130	148
IBAP	96	104	109	112	116
IBA	351	431	501	547	650
Total	550	643	729	789	914

*as of 30 June each year

Graph 3.1 Number of schools following the Middle Years Programme by IB region 2007–2011



Percentage of schools following the Middle Years Programme by IB region*	2007	2008	2009	2010	2011
IBAEM	18.73%	16.80%	16.32%	16.48%	16.19%
IBAP	17.45%	16.17%	14.95%	14.20%	12.69%
IBA	63.81%	67.03%	68.73%	69.33%	71.12%

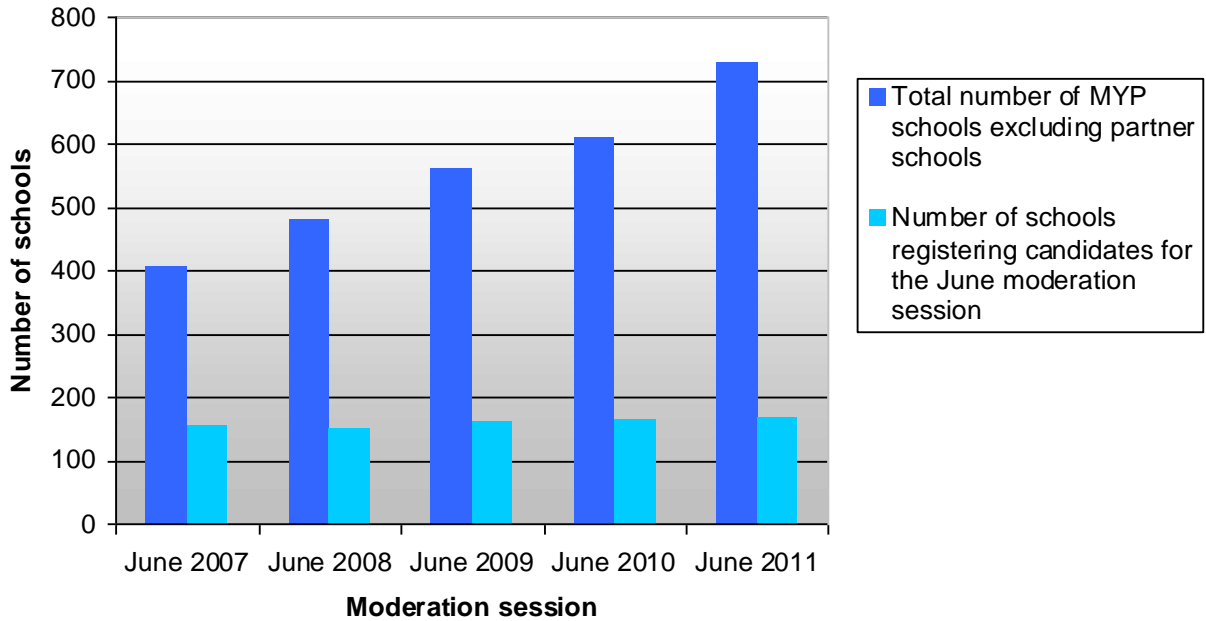
*as of 30 June each year

PART B: registration statistics

4 Number of schools registering candidates for moderation June 2007–June 2011

Number of schools registering candidates	June 2007	June 2008	June 2009	June 2010	June 2011
	155	151	161	166	167
Percentage of total number of schools*	38.08%	31.46%	28.75%	27.17%	22.91%

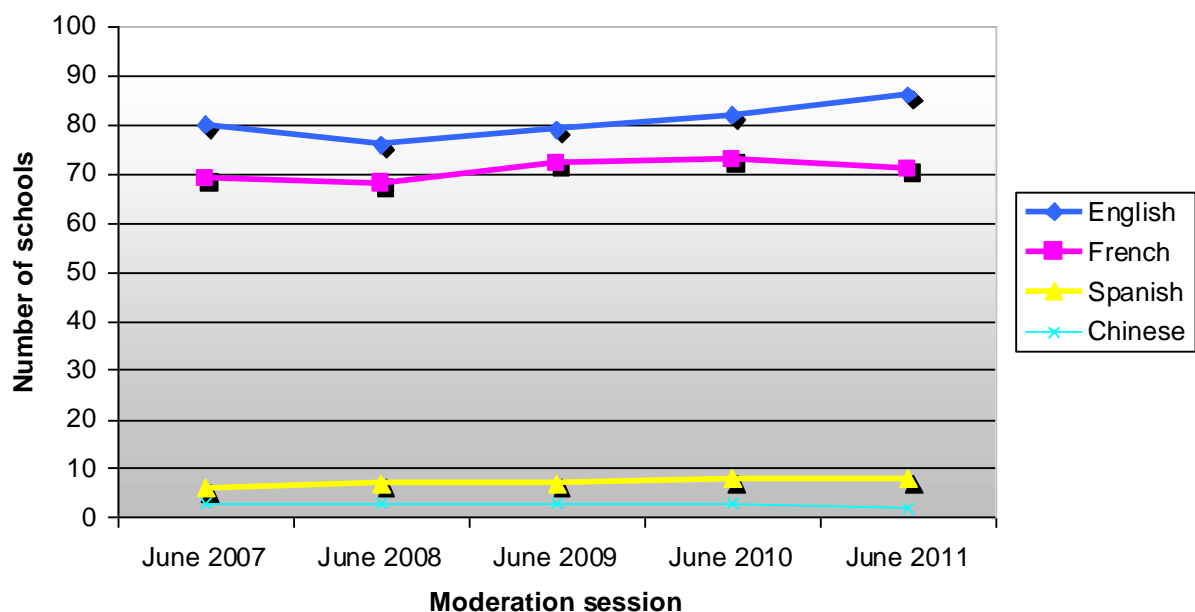
Graph 4.1 Number of schools registering candidates for moderation June 2007–June 2011



5 Number of schools registering candidates for moderation by working language June 2007–June 2011

Number of schools registering candidates by working language	June 2007	June 2008	June 2009	June 2010	June 2011
English	77	73	79	82	86
French	69	68	72	73	71
Spanish	6	7	7	8	8
Chinese	3	3	3	3	2
Total	155	151	161	166	167

Graph 5.1 Number of schools registering candidates by working language June 2007–June 2011

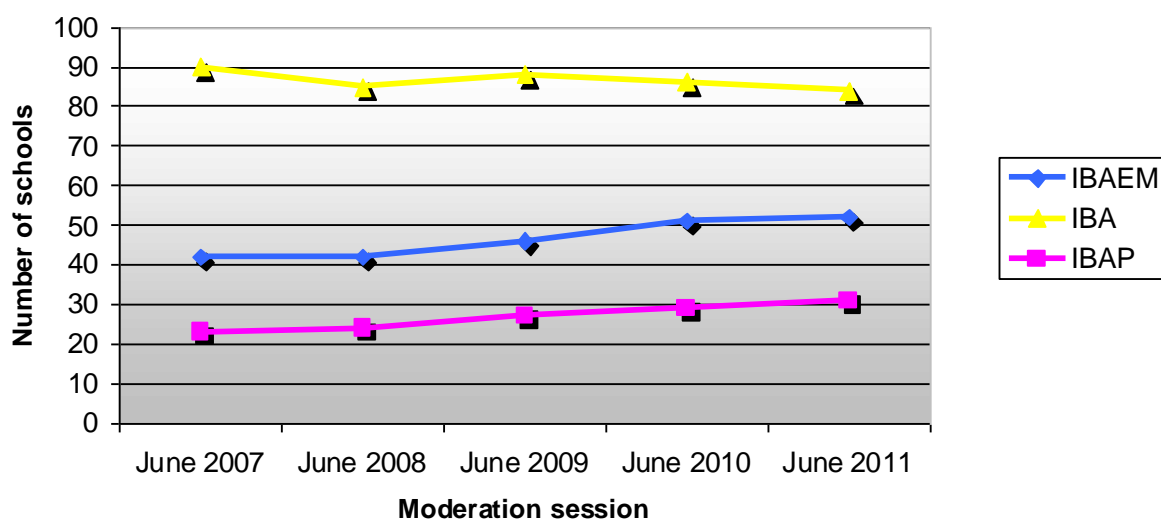


Percentage of schools registering candidates by working language	June 2007	June 2008	June 2009	June 2010	June 2011
English	49.68%	48.34%	49.07%	49.40%	51.50%
French	44.52%	45.03%	44.72%	43.98%	42.51%
Spanish	3.87%	4.64%	4.35%	4.82%	4.79%
Chinese	1.93%	1.99%	1.86%	1.81%	1.20%

6 Number and percentage of schools registering candidates for moderation by IB region June 2007–June 2011

Number of schools registering candidates by IB region	June 2007	June 2008	June 2009	June 2010	June 2011
IBAEM	42	42	46	51	52
IBAP	23	24	27	29	31
IBA	90	85	88	86	84
Total	155	151	161	166	167

Graph 6.1 Number of schools registering candidates by IB region June 2007–June 2011



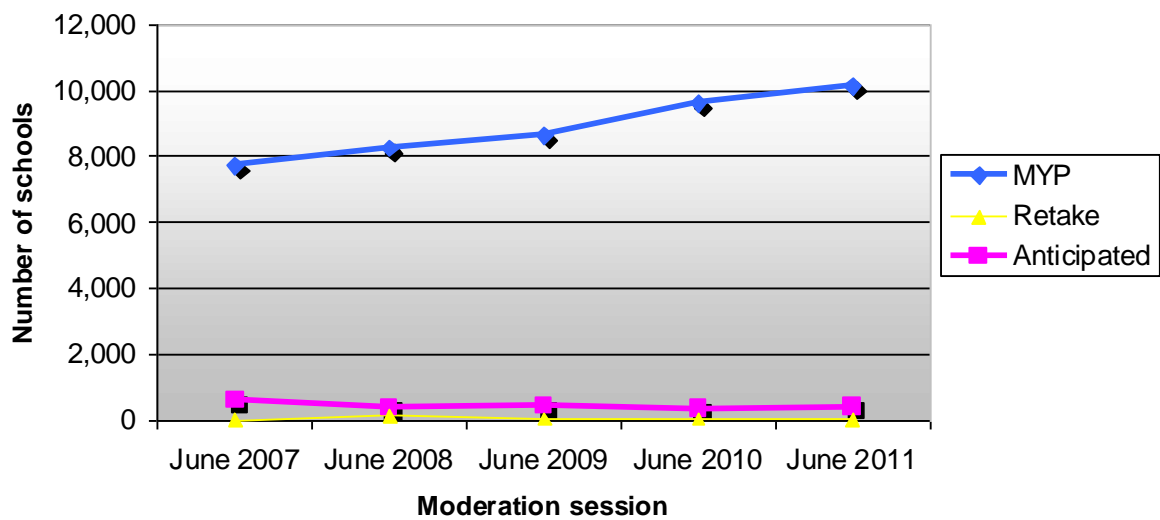
Percentage of schools registering candidates by IB region	June 2007	June 2008	June 2009	June 2010	June 2011
IBAEM	27.10%	27.81%	28.57%	30.72%	31.14%
IBAP	14.84%	15.89%	16.78%	17.47%	18.56%
IBA	58.07%	56.29%	54.65%	51.81%	50.30%

7 Number of candidates registered for moderation by category June 2007–June 2011

Number of candidates registered by category	June 2007	June 2008	June 2009	June 2010	June 2011
MYP	7,712	8,110	8,629	9,601	10,127
Anticipated	595	395	435	345	405
Retake	8	140	38	39	25
Total	8,315	8,645	9,102	9,985	10,557

Please Note: Anticipated category was introduced in 2005 and retake category in 2007

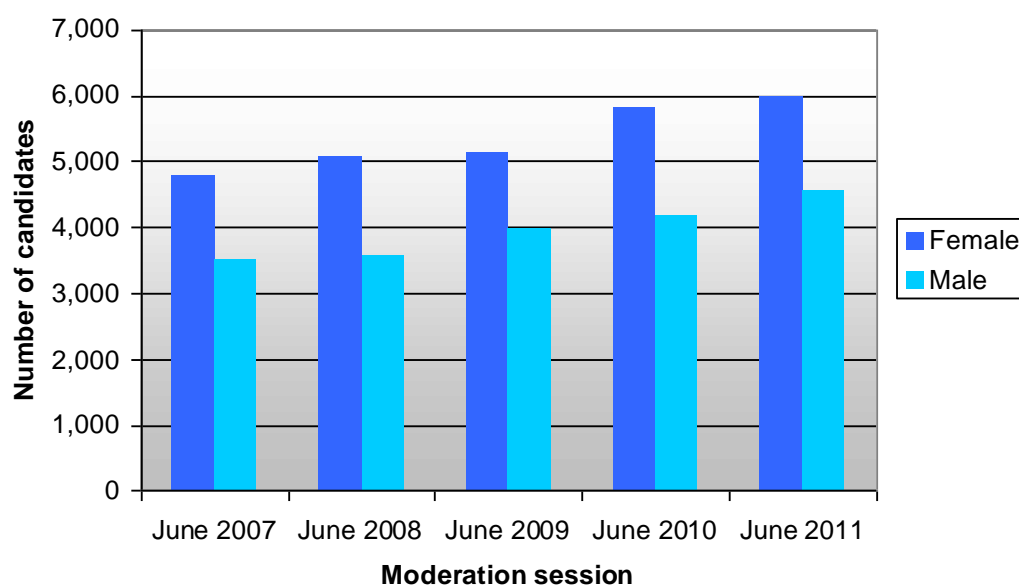
Graph 7.1 Number of candidates registered June 2007–June 2011



8 Number of candidates registered for moderation by gender June 2007–June 2011

Number of candidates registered by gender	June 2007	June 2008	June 2009	June 2010	June 2011
Female	4,800	5,058	5,129	5,817	5,996
Male	3,515	3,587	3,973	4,168	4,561
Total	8,315	8,645	9,102	9,985	10,557

Graph 8.1 Number of candidates registered by gender June 2007–June 2011

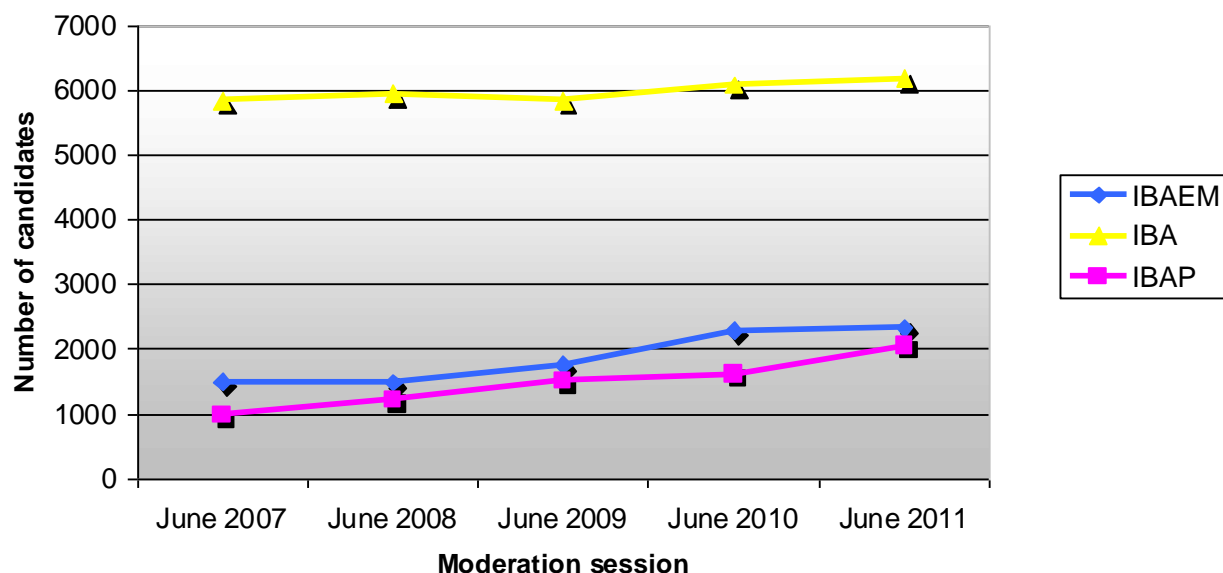


Percentage of candidates registered by gender	June 2006	June 2007	June 2008	June 2009	June 2010
Female	58.59%	57.73%	58.51%	56.35%	56.80%
Male	41.41%	42.27%	41.49%	43.65%	43.20%

9 Number of candidates registered for moderation by IB region June 2007–June 2011

Number of candidates registered by IB region	June 2007	June 2008	June 2009	June 2010	June 2011
IBAEM	1,494	1,485	1,756	2,295	2,333
IBAP	979	1,220	1,504	1,612	2,049
IBA	5,842	5,940	5,842	6,078	6,175
Total	8,315	8,645	9,102	9,985	10,557

Graph 9.1 Number of candidates registered by IB region June 2007–June 2011

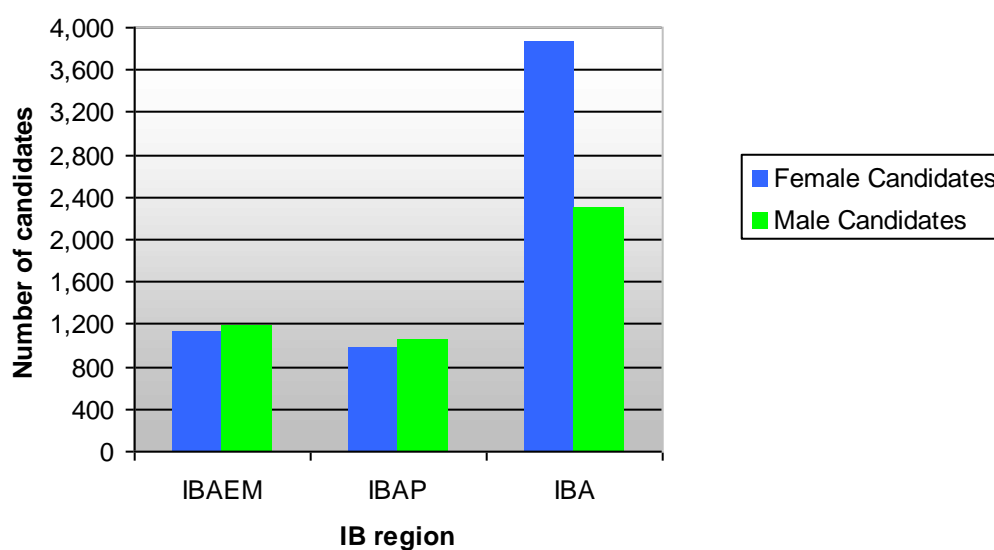


Percentage of candidates registered by IB region	June 2007	June 2008	June 2009	June 2010	June 2011
IBAEM	17.97%	17.18%	19.29%	22.98%	22.10%
IBAP	11.77%	14.11%	16.52%	16.14%	19.41%
IBA	70.26%	68.71%	64.18%	60.87%	58.49%

10 Number of candidates registered by gender and IB region June 2011

IB region	Number of candidates registered		Total number of candidates registered
	Number of female candidates	Number of male candidates	
IBAEM	1,139	1,194	2,333
IBAP	988	1,061	2,049
IBA	3,869	2,306	6,175
TOTAL	5,996	4,561	10,557

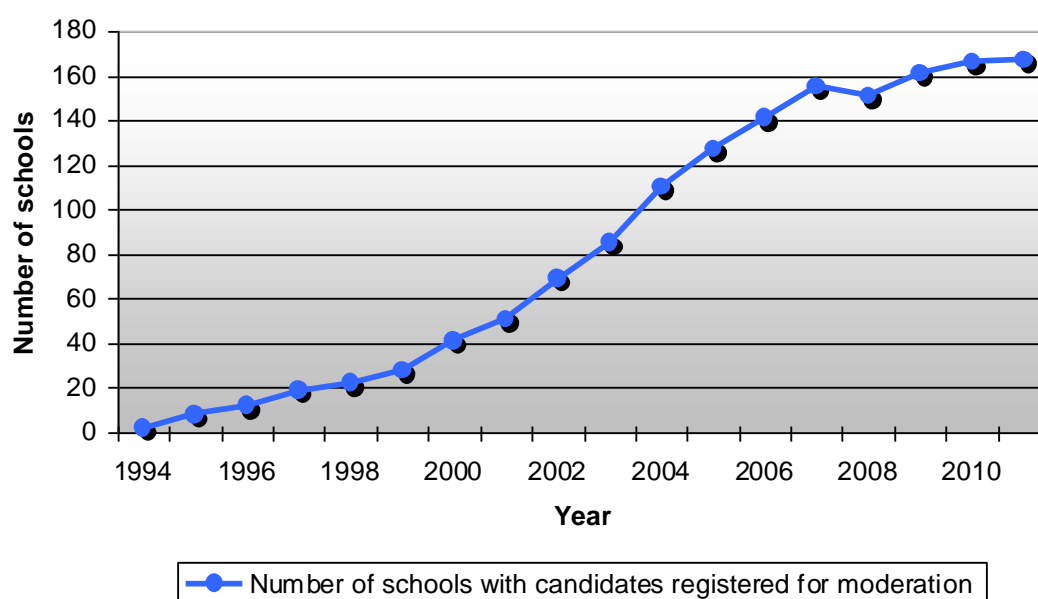
Graph 10.1 Number of candidates registered by gender and IB region June 2011



11 Summary of Middle Years Programme moderation: schools with moderated candidates June 1994–June 2011

Year	Number of schools moderated	Percentage increase	Number of candidates moderated	Percentage increase	Average number of moderated candidates per school
1994	2	-	137	-	68.50
1995	8	300%	1,319	862.77%	164.88
1996	12	50%	845	-35.94%	70.42
1997	19	58.33%	1,265	49.70%	66.58
1998	22	15.79%	1,269	0.32%	57.68
1999	28	27.27%	1,474	16.15%	52.64
2000	41	46.43%	2,232	51.42%	54.44
2001	51	24.39%	2,516	12.72%	49.33
2002	69	35.29%	3,047	21.10%	44.16
2003	85	23.19%	3,769	23.70%	44.34
2004	110	29.41%	4,731	25.52%	43.01
2005	127	15.45%	5,598	18.33%	44.08
2006	141	11.02%	7,073	26.35%	50.16
2007	155	9.93%	8,314	17.55%	53.64
2008	151	-2.58%	8,645	3.98%	57.25
2009	161	6.62%	9,102	5.29%	56.53
2010	166	3.11%	9,985	9.70%	60.15
2011	167	0.60%	10,557	5.73%	63.22

Graph 11.1 Summary of Middle Years Programme moderation: schools registering candidates for moderation June 1994–June 2011



12 Nationalities of candidates registered for moderation June 2011

Country name	Number of candidates	Country name	Number of candidates
AFGHANISTAN	7	KUWAIT	3
ALBANIA	1	KYRGYZSTAN	1
ALGERIA	15	LEBANON	11
ANGOLA	10	LITHUANIA	3
ARGENTINA	10	MACEDONIA, THE FORMER YUGOSLAV REPUBLIC OF	1
ARMENIA	1	MALAYSIA	58
AUSTRALIA	86	MALDIVES	2
AUSTRIA	14	MALTA	1
AZERBAIJAN	8	MAURITANIA	1
BAHAMAS	9	MAURITIUS	4
BANGLADESH	32	MEXICO (9)	165
BELARUS	1	MOLDOVA, REPUBLIC OF	1
BELGIUM	27	MONGOLIA	1
BENIN	1	MOROCCO	28
BERMUDA	10	MOZAMBIQUE	2
BHUTAN	1	MYANMAR	3
BOLIVIA	2	NAMIBIA	1
BOSNIA AND HERZEGOVINA	2	NEPAL	4
BRAZIL	24	NETHERLANDS (6)	296
BRITISH INDIAN OCEAN TERRITORY	2	NEW ZEALAND	15
BRUNEI DARUSSALAM	3	NIGERIA	9
BULGARIA	3	NORWAY	37
CAMBODIA	7	OMAN	2
CAMEROON	1	PAKISTAN	32
CANADA (1)	5,797	PALESTINIAN TERRITORY, OCCUPIED	2
CENTRAL AFRICAN REPUBLIC	1	PANAMA	1
CHILE	3	PAPUA NEW GUINEA	2
CHINA (8)	225	PERU	9
COLOMBIA	18	PHILIPPINES	20
CONGO	2	POLAND	50
COSTA RICA	1	PORTUGAL	38
COTE D'IVOIRE	1	QATAR	47
CROATIA	1	ROMANIA	9
CUBA	2	RUSSIAN FEDERATION	46
CZECH REPUBLIC	4	RWANDA	3
DENMARK	47	SAUDI ARABIA	24
DJIBOUTI	2	SERBIA	2
ECUADOR	12	SINGAPORE	71
EGYPT	70	SLOVAKIA	2
EQUATORIAL GUINEA	1	SLOVENIA	1
ESTONIA	1	SOLOMON ISLANDS	1
ETHIOPIA	6	SOMALIA	1
FIJI	1	SOUTH AFRICA	32
FINLAND	16	SPAIN (3)	376

Country name		Country name	Number of candidates
FRANCE	75	SRI LANKA	12
GAMBIA	1	SUDAN	2
GEORGIA	3	SWEDEN	54
GERMANY	101	SWITZERLAND	35
GHANA	1	TAIWAN	53
GREECE	3	TANZANIA, UNITED REPUBLIC OF	27
GUINEA	1	THAILAND	46
HAITI	1	TRINIDAD AND TOBAGO	1
HONG KONG	155	TUNISIA	1
HUNGARY	7	TURKEY	27
ICELAND	1	UGANDA	11
INDIA (7)	272	UKRAINE	16
INDONESIA	123	UNITED ARAB EMIRATES	7
IRAN, ISLAMIC REPUBLIC OF	16	UNITED KINGDOM (5)	315
IRAQ	6	UNITED STATES (2)	435
IRELAND	18	URUGUAY	2
ISRAEL	13	VENEZUELA	2
ITALY	49	VIETNAM	36
JAMAICA	1	VIRGIN ISLANDS, U.S.	1
JAPAN	88	YEMEN	2
JORDAN (10)	158	ZIMBABWE	1
KAZAKHSTAN	102		
KENYA	43		
KOREA, DEMOCRATIC PEOPLE'S REPUBLIC OF	4		
KOREA, REPUBLIC OF (4)	322	OTHER	1

**Top ten countries rankings displayed in brackets*

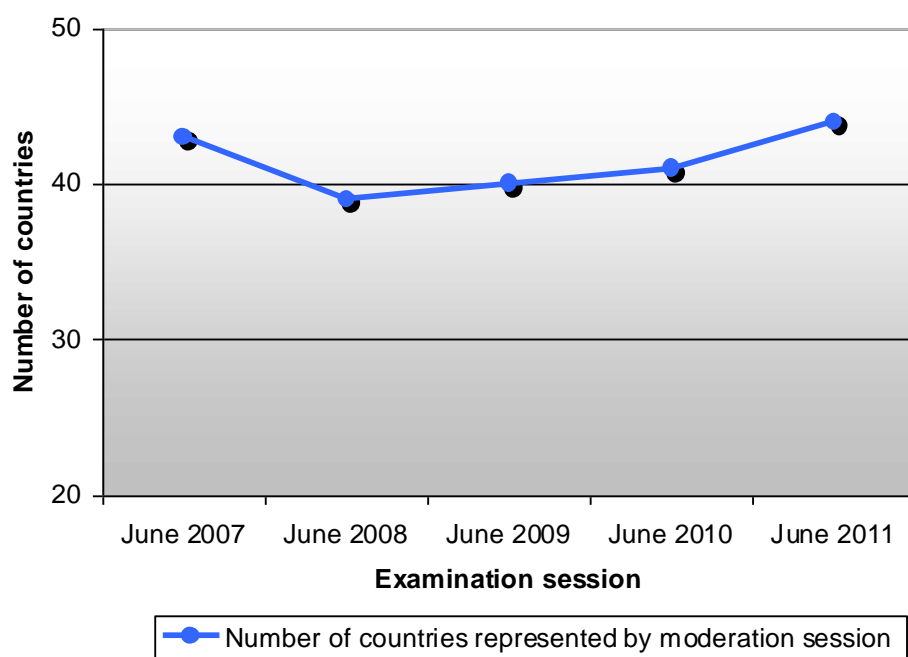
Total number of nationalities: 134

Candidates with dual nationality (second nationality of candidates is not included in the above): 926

13 Number of countries represented by moderation session June 2007–June 2011

Number of countries represented by examination session	June 2007	June 2008	June 2009	June 2010	June 2011
	43	39	40	41	44

Graph 13.1 Number of countries represented by examination session June 2007–June 2011



14 Number of candidates registered by country June 2011

Country name	Number of candidates registered	Country name	Number of candidates registered
ANGOLA	30	NORWAY	13
AZERBAIJAN	19	PAKISTAN	9
BAHAMAS	15	POLAND	38
BANGLADESH	38	PORTUGAL	57
BERMUDA	22	QATAR	100
CAMBODIA	30	RUSSIAN FEDERATION	28
CANADA (1)	5771	SAUDI ARABIA	15
CHINA (3)	498	SINGAPORE (6)	334
DENMARK	42	SPAIN (5)	400
ECUADOR	10	SRI LANKA	34
EGYPT	53	SWEDEN	27
GERMANY	41	SWITZERLAND (10)	168
HONG KONG (2)	524	TANZANIA, UNITED REPUBLIC OF	98
INDIA	75	THAILAND	99
INDONESIA (7)	213	TURKEY	52
JAPAN	48	UGANDA	41
JORDAN (9)	176	UKRAINE	29
KAZAKHSTAN	107	UNITED ARAB EMIRATES	131
KENYA	48	UNITED KINGDOM	126
MALAYSIA	19	UNITED STATES (8)	195
MEXICO	162	VIETNAM	128
MOROCCO	20		
NETHERLANDS (4)	474	Total number of candidates registered	10,557

**Top ten countries rankings displayed in brackets*

15 Number of candidates registered for moderation per subject June 2007–June 2011

Subject	2007	2008	2009	2010	2011
GROUP 1					
AFRIKAANS (APPROVED)*	-	-	-	-	1
ARABIC A	127	109	118	264	222
BANGLADESHI A	-	19	23	24	14
BURMESE (APPROVED)*	-	-	-	-	1
CHINESE A	139	125	286	302	543
CHINESE (APPROVED)*	-	-	-	2	2
DANISH A	-	-	6	9	8
DANISH (APPROVED)*	-	-	-	-	1
DUTCH A	254	230	269	290	276
DUTCH (APPROVED)*	-	-	-	1	1
ENGLISH A	2,874	2,882	3,249	3,652	3,779
FINNISH A	1	-	2	-	1
FINNISH (APPROVED)*	-	-	-	2	-
FRENCH A	4,117	4,410	4,432	4,884	5,157
FRENCH (APPROVED)*	-	1	1	-	1
GERMAN A	37	48	47	60	68
GERMAN (APPROVED)*	-	-	-	1	1
HEBREW (APPROVED)*	-	-	-	-	1
HINDI A	7	9	6	4	12
ICELANDIC A	1	1	1	1	-
INDONESIAN (APPROVED)*	-	-	-	1	1
INDONESIAN A	11	-	3	-	-
ITALIAN A	45	2	4	1	3
JAPANESE A	13	21	39	28	39
JAPANESE (APPROVED)*	-	1	-	-	6
KHMER (APPROVED)*	4	1	1	-	-
KOREAN A	33	107	135	141	127
KOREAN (APPROVED)*	9	3	-	1	-
LAOTIAN (APPROVED)*	-	-	-	1	-
NORWEGIAN A	-	-	-	1	11
NORWEGIAN (APPROVED)*	-	-	-	-	1
POLISH A	27	35	32	35	38
POLISH (APPROVED)*	-	-	-	-	1
PORTUGUESE (APPROVED)*	-	-	-	-	1
PORTUGUESE A	42	39	33	40	49
RUSSIAN A	121	143	155	189	124
SPANISH A	450	491	488	563	440
SPANISH (APPROVED)*	-	-	-	-	2
SWAHILI A	-	-	-	-	15
SWEDISH A	6	1	30	36	2
SWEDISH (APPROVED)*	-	-	-	5	2
THAI A	33	35	33	34	39
THAI (APPROVED)*	-	-	-	1	1
TURKISH A	-	-	-	-	1

TURKISH (APPROVED)*	-	-	-	1	-
VIETNAMESE (APPROVED)*	11	-	-	2	2
VIETNAMESE A	-	23	23	33	30
GROUP 1 TOTAL	8,362	8,736	9,416	10,609	11,024

* externally taught and approved by the IB

Subject	2007	2008	2009	2010	2011
GROUP 2					
ADVANCED ARABIC B	-	-	-	11	21
ADVANCED DUTCH B	18	21	27	35	18
ADVANCED ENGLISH B	2,532	2,640	2,656	3,005	3,232
ADVANCED FRENCH B	374	433	414	422	505
ADVANCED GERMAN B	7	12	19	34	25
ADVANCED INDONESIAN B	-	-	2	2	11
ADVANCED JAPANESE B	2	5	8	9	15
ADVANCED KHMER B	-	2	2	-	3
ADVANCED MALAY B	-	-	-	-	7
ADVANCED MANDARIN B	56	75	79	97	117
ADVANCED PORTUGUESE B	8	6	9	19	18
ADVANCED SPANISH B	17	21	26	40	15
ADVANCED SWAHILI B	5	-	-	1	6
ADVANCED THAI B	2	-	3	5	-
ARABIC B	10	14	20	56	37
ARABIC B FOUNDATION	-	-	10	11	11
DANISH B	-	-	8	4	6
DUTCH B	96	96	70	90	94
DUTCH B FOUNDATION	7	26	43	30	51
ENGLISH B	2,110	2,433	2,451	2,629	2,806
ENGLISH B FOUNDATION	16	-	3	15	38
FRENCH B	818	827	801	822	813
FRENCH B FOUNDATION	81	152	147	224	168
GERMAN B	198	147	159	155	143
GERMAN B FOUNDATION	22	37	54	60	61
HINDI B	20	11	7	25	39
INDON. B FOUNDATION	-	-	4	1	1
INDONESIAN B	21	11	25	10	76
ITALIAN B	7	-	-	-	-
JAPANESE B FOUNDATION	-	4	4	8	21
JAPANESE B	30	10	5	8	13
KAZAKH B	27	48	42	59	50
KHMER B	2	2	1	4	1
KHMER B FOUNDATION	-	1	-	1	-
MALAY B	-	-	-	-	2
MALAY B FOUNDATION	-	-	-	-	4
MANDARIN B FOUNDATION	62	57	109	106	127
MANDARIN B	117	168	174	166	253
PORTUGUESE B FOUNDATION	2	3	2	4	1
PORTUGUESE B	-	9	3	8	9

RUSSIAN B	7	6	5	10	15
RUSSIAN B FOUNDATION	4	-	-	-	3
SPANISH B	461	367	372	362	370
SPANISH B FOUNDATION	39	67	105	124	176
SWAHILI B	3	8	20	14	42
SWAHILI B FOUNDATION	3	-	2	5	8
SWEDISH B	-	-	-	-	1
THAI B	3	11	4	-	-
THAI B FOUNDATION	-	-	2	-	-
TURKISH B	-	-	1	-	-
URDU B	12	17	17	12	6
VIETNAMESE B FOUNDATION	4	-	-	-	-
VIETNAMESE B	1	1	-	-	-
GROUP 2 TOTAL	7,204	7,748	7,915	8,703	9,439

Subject	2007	2008	2009	2010	2011
GROUP 3					
BUSINESS STUDIES	-	-	94	85	177
ECONOMICS	-	131	115	175	327
GEOGRAPHY	1,350	1,338	1,411	873	838
HISTORY	5,819	5,876	5,784	3,600	2,945
HUMANITIES	1,152	1,402	1,736	5,274	6,296
GROUP 3 TOTAL	8,321	8,747	9,140	10,007	10,583

Subject	2007	2008	2009	2010	2011
GROUP 4					
BIOLOGY	1,954	1,944	1,848	1,461	1,587
CHEMISTRY	3,632	3,579	3,674	4,178	4,090
PHYSICS	3,241	3,417	3,300	3,368	3,779
SCIENCES	1,755	1,939	2,410	3,147	3,781
GROUP 4 TOTAL	10,582	10,879	11,232	12,154	13,237

Subject	2006	2007	2008	2009	2010
GROUP 5					
EXTENDED MATHS	4,415	4,700	4,936	5,216	5,454
MATHEMATICS	3,144	3,305	3,477	4,106	4,467
GROUP 5 TOTAL	7,559	8,005	8,413	9,322	9,921

Subject	2007	2008	2009	2010	2011
GROUP 6					
ARTS	150	-	-	-	-
DANCE	-	110	42	33	127
DRAMA	-	1,900	1,930	2,158	2,270
FILM	-	-	94	49	64
MUSIC	-	1,506	1,542	1,740	1,807

PERFORMING ARTS	3,309	14	-	-	14
VISUAL ARTS	4,299	4,854	5,050	5,814	5,936
GROUP 6 TOTAL	7,758	8,384	8,658	9,794	10,218
Subject	2007	2008	2009	2010	2011
GROUP 7					
PHYSICAL EDUCATION	7,555	8,006	8,386	9,147	9,918
GROUP 7 TOTAL	7,555	8,006	8,386	9,147	9,918
Subject	2007	2008	2009	2010	2011
GROUP 8					
COMPUTER TECHNOLOGY	2,170	1,875	1,859	1,835	2,044
DESIGN TECHNOLOGY	2,977	2,856	2,551	2,478	2,733
TECHNOLOGY	2,549	3,436	4,126	4,882	5,338
GROUP 8 TOTAL	7,696	8,167	8,536	9,195	10,115
Subject	2007	2008	2009	2010	2011
GROUP 9					
PERSONAL PROJECT	7,560	7,918	8,331	9,115	9,829
GROUP 9 TOTAL	7,560	7,918	8,331	9,115	9,829
ALL SUBJECTS TOTAL	72,597	76,590	80,027	88,046	94,284

PART C: results statistics

16 Analysis of results by subject June 2011

Subject	Level	Number of candidates	Percentage of candidates awarded grades							Mean grade
			1	2	3	4	5	6	7	
GROUP 1										
ARABIC A	MY	222				22	40	32	6	5.21
BANGLA A	MY									
CHINESE A	MY	543		1	4	27	31	29	8	5.07
DANISH A	MY									
DUTCH A	MY	271		1	3	41	41	13	1	4.66
ENGLISH A	MY	3750		1	5	27	36	25	6	4.97
FINNISH A	MY									
FRENCH A	MY	5,142		1	4	23	36	30	6	5.10
GERMAN A	MY	67			2	22	52	21	3	5.01
HINDI A	MY									
ITALIAN A	MY									
JAPANESE A	MY									
KOREAN A	MY	124			4	8	25	38	25	5.72
NORWEGIAN A	MY									
POLISH A	MY									
PORTUGUESE A	MY									
RUSSIAN A	MY	123			13	15	38	23	11	5.05
SPANISH A	MY	435			6	34	31	21	8	4.90
SWAHILI A	MY									
SWEDISH A	MY									
THAI A	MY									
TURKISH A	MY									
VIETNAMESE A	MY									
GROUP 1 TOTAL		10,932			5	25	35	27	7	5.03

Subject	Level	Number of candidates	Percentage of candidates awarded grades							Mean grade
			1	2	3	4	5	6	7	
GROUP 2										
ADVANCED ARABIC B	MY									
ADVANCED DUTCH B	MY									
ADVANCED ENGLISH B	MY	3,218			4	20	34	30	12	5.23
ADVANCED FRENCH B	MY	502		3	12	22	27	28	8	4.90
ADVANCED GERMAN B	MY									
ADVANCED INDONESIAN B	MY									
ADVANCED JAPANESE B	MY									
ADVANCED KHMER B	MY									
ADVANCED MALAY B	MY									
ADVANCED MANDARIN B	MY	117			3	27	26	28	16	5.27

Subject	Level	Number of candidates	Percentage of candidates awarded grades							Mean grade
			1	2	3	4	5	6	7	
GROUP 2										
ADVANCED SPANISH B	MY									
ADVANCED SWAHILI B	MY									
ARABIC B	MY									
ARABIC B FOUNDATION	MY									
DANISH B	MY									
DUTCH B	MY	93	1	0	10	30	28	19	12	4.89
DUTCH B FOUNDATION	MY	51	0	4	22	22	38	10	4	4.41
ENGLISH B	MY	2,798	0	1	7	20	33	28	11	5.14
ENGLISH B FOUNDATION	MY									
FRENCH B	MY	789	0	2	11	26	29	21	11	4.90
FRENCH B FOUNDATION	MY	164	0	3	15	31	30	13	8	4.60
GERMAN B	MY	131	1	1	7	24	37	20	10	4.96
GERMAN B FOUNDATION	MY	60	0	2	5	23	25	30	15	5.22
HINDI B	MY									
INDONESIAN B FOUNDATION	MY									
INDONESIAN B	MY	76	0	5	9	21	22	38	5	4.95
JAPANESE B FOUNDATION	MY									
JAPANESE B	MY									
KAZAKH B	MY									
KHMER B	MY									
MALAY B	MY									
MALAY B FOUNDATION	MY									
MANDARIN B FOUNDATION	MY	127	1	6	13	31	30	13	6	4.46
MANDARIN B	MY	253	0	2	10	18	29	25	16	5.11
PORTUGUESE B FOUNDATION	MY									
PORTUGUESE B	MY									
RUSSIAN B	MY									
RUSSIAN B FOUNDATION	MY									
SPANISH B	MY	367	0	4	6	29	31	20	10	4.86
SPANISH B FOUNDATION	MY	127	0	6	10	35	25	16	8	4.57
SWAHILI B	MY									
SWAHILI B FOUNDATION	MY									
SWEDISH B	MY									
URDU B	MY									
GROUP 2 TOTAL		9,293		1	7	22	32	27	11	5.10

*Subjects with less than 50 candidates registered have results distribution omitted from the above to prevent possible identification of individual candidate grades

Subject	Level	Number of candidates	Percentage of candidates awarded grades							Mean grade
			1	2	3	4	5	6	7	
GROUP 3										
BUSINESS STUDIES	MY	175	0	4	19	36	29	9	3	4.27
ECONOMICS	MY	325	0	4	17	31	31	16	1	4.39
GEOGRAPHY	MY	783	1	2	8	21	27	30	11	5.05
HISTORY	MY	2,902	1	1	8	19	34	28	9	5.06
HUMANITIES	MY	6,260	0	1	7	22	31	28	11	5.11
GROUP 3 TOTAL		10,445	0	1	8	22	32	27	10	5.06

Subject	Level	Number of candidates	Percentage of candidates awarded grades							Mean grade
			1	2	3	4	5	6	7	
GROUP 4										
BIOLOGY	MY	1,555	0	1	13	38	26	15	7	4.60
CHEMISTRY	MY	4,041	0	1	15	42	26	12	4	4.43
PHYSICS	MY	3,609	0	1	13	35	26	19	6	4.65
SCIENCES	MY	3,755	0	2	20	34	21	15	8	4.47
GROUP 4 TOTAL		12,960	0	2	16	37	24	15	6	4.52

Subject	Level	Number of candidates	Percentage of candidates awarded grades							Mean grade
			1	2	3	4	5	6	7	
GROUP 5										
EXTENDED MATHEMATICS	MY	5,427	0	1	8	36	33	18	4	4.70
MATHEMATICS	MY	4,441	0	4	15	39	25	13	4	4.37
GROUP 5 TOTAL		9,868	0	2	11	37	29	16	4	4.55

Subject	Level	Number of candidates	Percentage of candidates awarded grades							Mean grade
			1	2	3	4	5	6	7	
GROUP 6										
DANCE	MY	122	0	2	7	30	30	18	13	4.98
DRAMA	MY	2,222	0	0	4	28	34	27	7	5.05
FILM	MY	64	0	0	3	28	27	25	17	5.25
MUSIC	MY	1,773	0	1	8	31	31	25	4	4.84
PERFORMING ARTS	MY									
VISUAL ARTS	MY	5,862	0	1	7	27	30	27	8	4.99
GROUP 6 TOTAL		10,057	0	1	6	28	31	27	7	4.98

Subject	Level	Number of candidates	Percentage of candidates awarded grades							Mean grade
			1	2	3	4	5	6	7	
GROUP 7										
PHYSICAL EDUCATION	MY	9,859	0	1	8	33	32	21	5	4.80
GROUP 7 TOTAL		9,859	0	1	8	33	32	21	5	4.80

Subject	Level	Number of candidates	Percentage of candidates awarded grades							Mean grade
			1	2	3	4	5	6	7	
GROUP 8										
COMPUTER TECHNOLOGY	MY	1,961	4	4	19	27	20	15	11	4.47
DESIGN TECHNOLOGY	MY	2,670	1	1	5	19	27	28	19	5.28
TECHNOLOGY	MY	5,307	0	1	10	26	29	23	11	4.96
GROUP 8 TOTAL		9,938	1	2	10	23	27	23	14	4.95
Subject	Level	Number of candidates	Percentage of candidates awarded grades							Mean grade
			1	2	3	4	5	6	7	
GROUP 9										
PERSONAL PROJECT	MY	9,707	0	2	11	16	32	21	18	5.11
GROUP 9 TOTAL		9,707	0	2	11	16	32	21	18	5.11
ALL SUBJECTS TOTAL		93,060	415	1,203	8,635	25,299	28,297	20,852	8359	4.89

17 Mean grade distribution by subject June 2006 – June 2010

Subject	2007	2008	2009	2010	2011
GROUP 1					
ARABIC A	5.15	5.22	5.37	4.96	5.21
BANGLA A	-	4.84	4.50	4.52	4.93
CHINESE A	5.28	5.26	4.83	4.83	5.07
DANISH A	-	-	5.67	6.00	5.57
DUTCH A	4.44	4.60	4.54	4.57	4.66
ENGLISH A	4.90	4.98	4.91	4.95	4.97
FINNISH A	6.00	-	4.50	-	6.00
FRENCH A	5.11	5.12	5.06	5.11	5.10
GERMAN A	5.16	5.17	5.18	5.14	5.01
HINDI A	6.43	6.22	6.17	6.75	6.67
ICELANDIC A	5.00	5.00	6.00	5.00	-
INDONESIAN A	4.91	-	6.33	-	-
ITALIAN A	4.68	4.00	5.50	6.00	3.67
JAPANESE A	4.69	5.28	5.50	6.11	5.75
KOREAN A	5.58	5.59	5.26	5.93	5.72
NORWEGIAN A	-	-	-	6.00	4.27
POLISH A	4.74	4.85	5.53	5.40	4.89
PORTUGUESE A	5.17	4.95	5.00	4.63	5.16
RUSSIAN A	5.03	5.03	4.70	4.74	5.05
SPANISH A	5.10	5.03	4.70	5.02	4.90
SWAHILI A	-	-	-	-	5.93
SWEDISH A	6.00	6.00	5.03	4.51	5.00
THAI A	5.15	5.11	5.18	5.09	5.13
TURKISH A	-	-	-	-	6.00
VIETNAMESE A	-	5.41	4.95	4.73	4.90
GROUP 1 TOTAL	5.02	5.06	4.97	5.03	5.05

Subject	2007	2008	2009	2010	2011
GROUP 2					
ADVANCED ARABIC B	-	-	-	5.27	5.14
ADVANCED DUTCH B	3.39	4.67	4.78	4.63	4.78
ADVANCED ENGLISH B	4.94	4.96	5.07	5.15	5.23
ADVANCED FRENCH B	5.08	4.93	4.71	4.93	4.90
ADVANCED GERMAN B	5.14	5.75	5.00	5.21	5.28
ADVANCED INDONESIAN B	-	-	4.00	7.00	6.09
ADVANCED JAPANESE B	6.50	5.80	5.86	6.00	5.87
ADVANCED KHMER B	-	6.00	6.00	-	7.00
ADVANCED MALAY B	-	-	-	-	6.00
ADVANCED MANDARIN B	5.48	5.77	5.48	5.42	5.27
ADVANCED PORTUGUESE B	5.75	6.00	5.50	6.58	5.56
ADVANCED SPANISH B	6.25	5.43	5.88	4.90	5.67
ADVANCED SWAHILI B	5.80	-	-	7.00	6.60
ADVANCED THAI B	6.00	-	6.67	6.00	-
ARABIC B	4.60	5.64	5.30	4.79	5.65
ARABIC B FOUNDATION	-	-	4.70	5.00	4.00
DANISH B	-	-	6.00	6.00	5.50
DUTCH B	4.74	4.76	4.67	4.50	4.89
DUTCH B FOUNDATION	3.57	4.12	4.39	4.37	4.41
ENGLISH B	5.07	5.15	5.23	5.29	5.14
ENGLISH B FOUNDATION	4.38	-	4.67	4.36	4.74
FRENCH B	4.65	4.77	4.72	4.87	4.90
FRENCH B FOUNDATION	4.24	4.55	4.60	4.53	4.60
GERMAN B	4.55	4.77	4.85	4.98	4.96
GERMAN B FOUNDATION	4.50	5.03	5.00	5.08	5.22
HINDI B	6.15	6.00	5.14	4.56	4.21
INDONESIAN B FOUNDATION	-	-	4.25	4.00	4.00
INDONESIAN B	5.43	5.09	5.84	4.90	4.95
ITALIAN B	6.14	-	-	-	-
JAPANESE B FOUNDATION	-	4.00	4.75	4.25	4.95
JAPANESE B	3.53	6.20	5.40	4.75	5.75
KAZAKH B	4.92	5.17	4.90	5.05	4.92
KHMER B	5.00	5.00	6.00	5.00	5.00
KHMER B FOUNDATION	-	4.00	-	3.00	-
MALAY B	-	-	-	-	5.50
MALAY B FOUNDATION	-	-	-	-	5.25
MANDARIN B FOUNDATION	3.94	4.25	4.85	4.61	4.46
MANDARIN B	5.35	4.95	5.21	5.18	5.11
PORTUGUESE B FOUNDATION	5.50	4.67	4.00	4.75	5.00
PORTUGUESE B	-	5.33	4.33	5.25	4.44
RUSSIAN B	5.00	5.40	5.80	5.80	5.87
RUSSIAN B FOUNDATION	5.00	-	-	-	6.33
SPANISH B	4.32	4.45	4.86	5.02	4.86
SPANISH B FOUNDATION	3.97	4.52	4.26	4.52	4.57
SWAHILI B	4.67	4.13	5.25	5.79	5.29

SWAHILI B FOUNDATION	4.00	-	4.00	4.60	4.50
SWEDISH B	-	-	-	-	6.00
THAI B	4.33	5.10	4.25	-	-
THAI B FOUNDATION	-	-	4.50	-	-
TURKISH B	-	-	5.00	-	-
URDU B	4.83	3.53	3.82	4.25	4.17
VIETNAMESE B FOUNDATION	4.75	-	-	-	-
VIETNAMESE B	4.00	7.00	-	-	-
GROUP 2 TOTAL	4.89	4.96	5.03	5.10	5.09

Subject	2007	2008	2009	2010	2011
GROUP 3					
BUSINESS STUDIES	-	-	3.94	3.93	4.27
ECONOMICS	-	3.90	4.03	4.05	4.39
GEOGRAPHY	5.06	5.19	5.02	5.07	5.05
HISTORY	5.00	5.03	5.11	5.13	5.06
HUMANITIES	4.70	4.49	4.74	5.04	5.11
GROUP 3 TOTAL	4.97	4.96	5.00	5.05	5.06

Subject	2007	2008	2009	2010	2011
GROUP 4					
BIOLOGY	4.23	4.38	4.25	4.47	4.60
CHEMISTRY	4.41	4.39	4.32	4.39	4.43
PHYSICS	4.46	4.54	4.56	4.61	4.65
SCIENCES	4.43	4.52	4.47	4.51	4.47
GROUP 4 TOTAL	4.40	4.46	4.41	4.49	4.52

Subject	2007	2008	2009	2010	2011
GROUP 5					
EXTENDED MATHEMATICS	4.62	4.70	4.69	4.62	4.70
MATHEMATICS	4.41	4.40	4.34	4.39	4.37
GROUP 5 TOTAL	4.53	4.58	4.54	4.52	4.55

Subject	2007	2008	2009	2010	2011
GROUP 6					
ARTS	3.92	-	-	-	-
DANCE	-	5.30	5.59	4.79	4.98
DRAMA	-	4.93	4.97	4.94	5.05
FILM	-	-	5.43	5.30	5.25
MUSIC	-	4.79	4.71	4.82	4.84
PERFORMING ARTS	4.78	5.64	-	-	4.93
VISUAL ARTS	5.04	4.97	4.91	5.03	4.99
GROUP 6 TOTAL	4.90	4.93	4.90	4.97	4.98

Subject	2007	2008	2009	2010	2011
GROUP 7					
PHYSICAL EDUCATION	4.66	4.74	4.62	4.70	4.80
GROUP 7 TOTAL	4.66	4.74	4.62	4.70	4.80

Subject	2007	2008	2009	2010	2011
GROUP 8					
COMPUTER TECHNOLOGY	4.10	4.27	4.49	4.48	4.47
DESIGN TECHNOLOGY	4.38	4.65	5.03	5.28	5.28
TECHNOLOGY	4.15	4.28	4.53	4.89	4.96
GROUP 8 TOTAL	4.23	4.41	4.67	4.91	4.95

Subject	2007	2008	2009	2010	2011
GROUP 9					
PERSONAL PROJECT	5.03	5.07	5.04	5.13	5.11
GROUP 9 TOTAL	5.03	5.07	5.04	5.13	5.11

18 Mean grade worldwide June 2007–June 2011

Mean grade per examination session	June 2007	June 2008	June 2009	June 2010	June 2011
	4.73	4.79	4.79	4.87	4.89

19 Number of MYP certificates awarded June 2007 –June 2011

Number of candidates awarded a certificate	June 2007	June 2008	June 2009	June 2010	June 2011
	5,274	6,217	6,670	7,427	8,058